

POCKLINGTON
ARTS
CENTRE



THE
Five
LAND THE
SHOEMAKER
Save Christmas

Adapted by
Elizabeth Godber

Directed by
Jane Thornton

7 to 16
December 2023



Illustration Tom Fox

Welcome

The Elves and the Shoemaker save Christmas

We are delighted to have had the opportunity to work with such a dynamic team on **Pocklington Arts Centre's** first ever home-grown production. None of this would have been possible without the incredible generosity and enthusiasm of our volunteers and, of course, you, our loyal audience.

If it's your first time visiting us — a huge warm welcome. If you've returned to continue to support the work we do — thank you.

Please sit back, relax and enjoy. Merry Christmas!

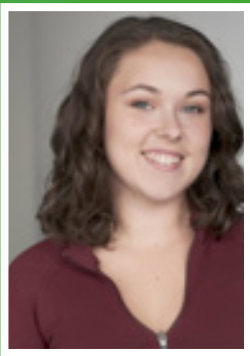
Elizabeth Godber | Writer

I am so excited to welcome everyone to **Pocklington Arts Centre** this Christmas for *The Elves and the Shoemaker save Christmas*. Born and raised in East Yorkshire I grew up visiting **Pocklington Arts Centre**, and so it has been an absolute privilege to write this show.

I hope you all have as much fun watching it as I did writing it, whilst you join Jingle, Sparkle and Dave as they attempt to save Christmas!



Cast



Jingle — Jade Farnill

Jade Farnill is a 2023 graduate and a member of **The Godber Theatre Foundation**. From **The Hammond School** in Chester, where she recently completed a degree in Musical Theatre Performance and played ‘Mary Magdalene’ in their graduate production of *Jesus Christ Superstar*. Since then, she has performed in *Mike and Millie Go to the Seaside* — a play for people living with dementia — with **Smashing Mirrors Theatre Company**, and *Out Loud*, with **Middle Child**.

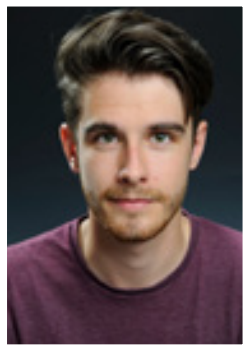


Sparkle — Matheea Ellerby

Matheea Ellerby is a 2023 Acting graduate from the **Liverpool Institute for Performing Arts**, where she played roles of ‘Helena’ in an adaptation of *The Rover*, along with ‘Hetty’ in an all female production of *The Lord of the Flies*. Matheea is also a proud member of **The Godber Theatre Foundation**, and is very pleased to complete the cast in her debut professional appearance as ‘Sparkle’.



Cast



Daredevil Dave — Dylan Allcock

Dylan Allcock is an Actor, Theatre Maker and Composer from Accrington, Lancashire. He trained at E15, and is a regular contributor to the world's longest running comedy sketch show, *NewsRevue*, as well as being in-house composer for the comedy improv troupe *The Noise Next Door* (BBC, ITV).

He collaborates frequently with Elizabeth Godber and the **John Godber Company**, serving as MD for *The Remarkable Tale of Dorothy Mackaill* (Hull New Theatre/East Riding Theatre) and *Mike and Millie Go to the Seaside* (SJT, Hull Truck, Derby Theatre). Other work has featured on BBC Upload and been Musical Theatre Network's 'Pick of the Week'. In 2022 Dylan was nominated 'Best New Actor' (Cannes Indie Shorts Awards) for his role in *Eigengrau*.

Further credits include: *Kill the Clown (Young Vic Taking Part)*; *Dorothy Mackaill* (Hull New Theatre); *The Grift* (Tarento Productions); *The Cherry Orchard* (Tristan Bates Theatre); *The Two Gentlemen of Verona* (Ellen Terry Barn Theatre).

Writing/Directing: *NewsRevue* (★★★★★, Canal Café Theatre 2021); *Crumbleflan: LIVE!* (★★★★, Lion & Unicorn 2022); *Brazen Hodgepodge* (Canal Café Theatre, 2023); *Pole to Pole* (Actor Awareness/Old Courts, Wigan); *Scrooge & Company* (★★★★, Canal Café Theatre 2020).



Creatives



Director — Jane Thornton

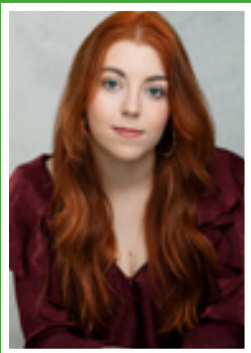
Jane Thornton trained at **Bretton Hall College** and has an Honorary degree from Hull University. She is a director of the **John Godber Company** and the **Godber Theatre Foundation** and a patron of **National Drama** and the **National Youth Arts Trust**.

As an actor, Jane was in the **Olivier Award**-winning production of *Up 'n' Under* and has appeared in the original casts of many of **John Godber's** plays. She has experience working in theatre, film, TV and radio drama.

As a director, Jane has worked regionally, internationally and in the West End.

Jane's writing credits are numerous, for both stage, radio and TV and she is the recipient of two **BAFTAS**.

Jane has also worked as a drama teacher, youth theatre leader and often works in schools in Hull on projects with **The Godber Theatre Foundation**.



Writer — Elizabeth Godber

Elizabeth Godber is a Hull-born writer. She studied BA Creative Writing and English at the **University of Hull**, and then MA Writing for Performance and Publication at the **University of Leeds**. She is currently a PhD student at the **University of Hull**.

Elizabeth's adaptation of *The Comedy of Errors* was recently nominated for a **UK Theatre Award**.

Elizabeth's stage writing credits include: *The Remarkable Tale of Dorothy Mackaill* (**East Riding Theatre** and **Hull New Theatre**); *The Comedy of Errors (More or Less)* (**The Stephen Joseph Theatre** and **Shakespeare North Playhouse**); *Ruby and the Vinyl* (**John Godber Company/tour**); *M&S: Dressed in Time* (**Leeds Playhouse**); *Three Emos* (tour); *Festive Spirits* (**Hull City Hall/ Burton Constable Hall**) and others.

Elizabeth's poetry and film/audio credits include: *Forget Me Not* (**BBC Radio 6 Music**); *The Way You Look Tonight* (**BBC Upload Festival/iPlayer**); *Does This Make Sense?* (**Random Acts for Channel 4**); and *Restless Verse* (Online) amongst others.



Creatives



Costume/Props Designer — Kate Noble

Kate is a self taught artist with a passion for using creativity to support mental health after training as a counsellor. She has a background in teaching, and environmental education and her interest in nature has underpinned her focus on the use of only natural and upcycled materials in her art work. Kate specialises in sculptures made from willow, wire, paper and anything else she can find that has been discarded.

Kate runs art and crafts workshops for teachers and children in schools, and therapists in training. Currently, Kate runs creative workshops at **Pocklington Arts Centre** for **Dementia Forward** groups and families.



Set Designer — Rick Kay

Rick lives in Howden and is an active member of local arts and theatre groups. As former chair of the **Howden Shire Hall Trust**, he also proudly coerced/led the design and development of that venues theatre space over the last 30 years.

Although a former Equity card holder, he works in the world of community and semi-professional productions. Recent credits include a 5mtr. high winding tower for Spoken Words production of 'Brassed Off' and a true to life Bar set in a black space for a subsequent production of Jim Cartright's 'Two'

Now allegedly retired he should know better, but the patio workshop in Howden keeps on producing and recycling sets props and artefacts for local shows and productions.

Creatives



Producer — Angela Stone

Angela Stone was appointed Director of **Pocklington Arts Centre** in November 2022. During the past year of working with an all-new team, she has introduced a number of community-based initiatives and ambitious projects to complement the established reputation and varied programming of this 200 seat venue which regularly punches above it's weight with the calibre of artists and performers it attracts.

As Producer of *The Elves and the Shoemaker save Christmas*, Angela has brought together a team comprising of respected creatives, early career artists and emerging actors from across the region to deliver this magical, musical Christmas production for all the family.

Angela has over 20 years' experience in arts management having previously worked in other regional venues for example, **Hull Truck Theatre**, and has supported a number of creative organisations and theatre companies on a freelance basis.

Producer credits for **Cast in Stone** productions: Eve Ensler's *The Vagina Monologues* (2018), *Folk* by Tom Wells (2018), *I want that Hair* by Jane Thornton (2019) and an original adaptation of *The Snow Queen* (2021)



Lighting Design — Benjamin Wall

Benjamin Wall, Lighting and Sound Designer brings shows to life with his 15 plus years of expert technical knowledge.

With a background in stage lighting for theatres, music and comedy venues across the East Riding and Yorkshire, Benjamin continues to work closely with **Pocklington Arts Centre** to produce vibrant shows.

Theatre credits include: *Paint the Town Fred*, (**East Riding Theatre**); *A Dickens of Christmas* (**East Riding Theatre**); *The Vultures Song* (**Blah, Blah, Blah**, 2020); *Desert Island Flicks*, *Blast from the Past* and *Spiltmilk: Say Dance*, (**Spiltmilk Dance**, national tours).

Music credits include: **The UK Pink Floyd Experience**, (Lighting design *Animals* UK tour); *Ed the Dog* (**BBC Radio One Live from Maida Vale, Glastonbury Festival, Circa Waves**); *Charlie Barnes* (of **Bastille**) (UK and European tour).

The Elves

Director	Jane Thornton
Writer	Elizabeth Godber
Original songs and Music Direction	Dylan Allcock
Set Design	Rick Kay
Set Build	Rick Kay, Roy Jefford, Angela Stone and Benjamin Wall
Wardrobe and Prop Design	Kate Noble
Costume and Props Team	Julie Burn, Kate Fisk, Melissa Gray, Pearl Harris, Lesa Newman, Sydney Alicia Newman, Ciorstaidh NicChoinnic and Anne Talbot
Stage Managers and Sound Programming	Elizabeth Godber and Benjamin Wall
Producer	Angela Stone
Lighting Design	Benjamin Wall
Venue Manager	Dave Parker
Marketing	Isobel Bielby and Jennifer Bracegirdle
Illustrations	Tom Fox
Photography	Abbie Eliza Photography
Promotional Design	Red Bonsai
Christmas Tree Festival	Kate Fisk, Julie Burn and Melissa Gray
Elf Trail Costumes	Pearl Harris
Pocklington Arts Centre Decorations	Lynne Aikman, Julie Burn, Kate Fisk, Melissa Gray, Lesa Newman and Young People Count
Programme Design	Benjamin Wall

Thank You to

Pocklington Arts Centre would like to thank **The Godber Theatre Foundation** for supporting this production.



Fletchers (Pocklington's own shoemaker) and all the local businesses who have participated in the **Elf Trail**.

Theatre Digs

Jennifer Bracegirdle and Jenny Wells

Bar Staff

Bethany Anderson, Jennifer Bracegirdle and Chris Waite

Our Volunteers

Janet Anderson
Chloe Asquith,
Janet Brader
Julie Burn
Angela Carter
Amanda Carver
Christine Chafer
Lindsay & Dan Conway
Amanda Dance
Sheila Derrick (DM)
Christopher Dickinson
Gail Furlong

Graham Gillyon
Jim Gilpin
Jan Goodall
Melissa Gray
Vick & Chris Heald
Philip Hepworth
Maggie Holliday
Tricia Hutchinson
Anne & Stephen Ingham
Phill Jackson
Janice & Guy King
Ged Leach

Margaret Leach
Gillian Miles-Morgan
Carol Midgley
Lesa Newman
Will & Les Nutt
Lamorna Nieuwold
Christine Peak
Margaret Reid
Angela Singh (DM)
Catherine Sleightholme
Amanda Smith
Christine Stringfellow

Lydia Stonelake
Kathy Taylor
Andrew Tyler (DM)
Sheila Webster (DM)
Fiona Welburn (DM)
Jenny Wells
Angela Wilson
Judith Williamson
Rex Wood (DM)
Chris Wood

Friends of Pocklington Arts Centre committee

Angela Singh (Chair)
Jan Anderson (Deputy Chair)
Janet Brader (Treasurer)
Fiona Eldridge

Sue Knill
Melanie Iredale
Les Kennedy

Community Café Volunteers

Cyndi Walton
Angela Wilson
Mandy Carver
Will Nutt
Les Nutt

Pearl Harris
Tricia Hutchinson
Christine Peak
Ged Leach
Janice Chattaway

Anne Young
Chrissie Chafer
Carol Midgeley
Sheila Webster



This year our new elf-themed Christmas decorations are upcycled from discarded items, plastic bags and packaging, card that we already had and the Christmas paper that we bought is made without any plastic so can be recycled with paper or reused.

This would not have been possible without the help of a wonderful team of volunteers, participants in our community workshops and members of Young People Count.

The props and costumes for the production are also mostly upcycled.

Over 95% are made from pre loved, discarded, items or are loaned to us

Pocklington Arts Centre would like to thank our funding partners



Supported using public funding by
**ARTS COUNCIL
ENGLAND**



**Pocklington
Town Council**





Join our Mailing List

<https://pocklingtonartscentre.co.uk/join-our-mailing-list/>



Help us to improve your Pocklington Arts Centre experience

[Please complete our feedback form](#)

